

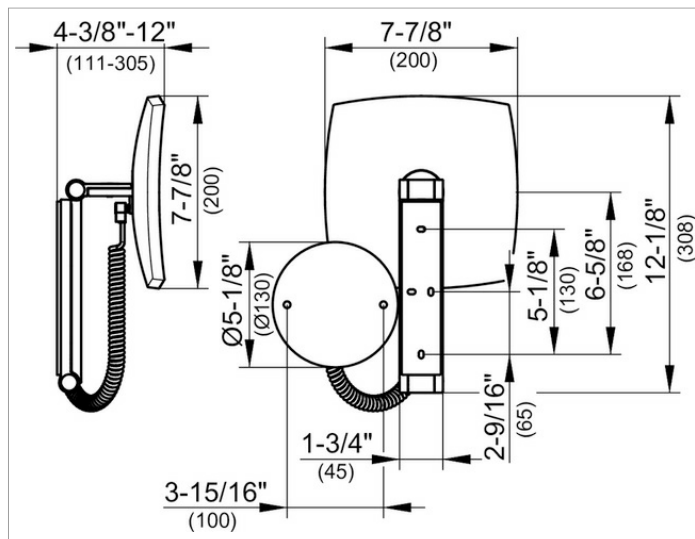
Cosmetic mirrors

17613019050 Cosmetic mirror

PRODUCT



DRAWING



PRODUCT ATTRIBUTES

illuminated, 5-stage adjustable light color from 2700 kelvin (warm white) to 6500 kelvin (daylight)
 glass control panel, spiral cord (Length 15-3/4 inch)
 on pivoted arm adjustable in three dimensions
 one-sided mirror, magnification factor x 5
 Operation:
 Glass control panel with capacitive touch sensor and LED display
 Power supply:
 Connection via wall socket,
 12 V in-wall adapter, input 110 V,
 standby consumption: < 0.5 watt
 Illumination:
 LED 7 watt (lifespan > 50.000 hours)
 EEK: ,

SPECIFICATIONS

KEUCO iLook_move cosmetic mirror, 17613019050
 high quality cosmetic mirror, square,
 chrome-plated, illuminated with adjustable light color from 2700 kelvin (warm white) to 6500 kelvin (daylight),
 operated by glass control panel with capacitive touch sensor and LED display, spiral cord (Length 15-3/4")
 on pivoted rail,
 surface wall-mounted with 4 fixing points
 for an optimal load distribution
 adjustable in three dimensions, one-sided mirror, concave
 magnification factor x 5,
 Height wall mounting 7-1/8", Width ca. 1-3/4",
 max. Height ca. 19-11/16", External dimensions 7-7/8" x 7-7/8",
 max. depth ca. 12",
 Power supply via wall socket,
 12 V in-wall adapter, input 110 V
 standby consumption: < 0.5 watt

SURFACE

chrome-plated

Warranty: KEUCO products are covered by a 5-year manufacturer's warranty, in effect from the date of purchase. During this time, proven product defects will be remedied free of charge. Warranty claims must be filed in writing, including a detailed description of the defect immediately after a defect has occurred. For a copy of our detailed product warranty policy, please contact us at office-usa@keuco.com.
Installation: KEUCO products must be installed by a qualified professional in accordance with the respective installation guidelines and any applicable federal / local building codes and regulations.