



Bathtub - Tara.

Tub mixer for wall-mounted installation - polished chrome

Article number: 25 100 892-00



- 9-1/2" Projection
- Round aerator
- Tub / shower diverter
- 3/8" Shower outlet
- Flanges Ø 2-1/2"
- 1/2" connection
- Center to center 5-7/8" ± 6"
- Water flow rate limited to max. 5.8 gpm
- Fittings group in compliance with DIN 4109: 1
- NOTE: Local building codes may require the use of an anti-scald device. Please refer to remote pressure balance valve (35 910 970 90)
- Internal backflow preventer.
- Combination with risers possible on request (x-TRA SERVICE).



polished chrome

Accessory is required for this item.

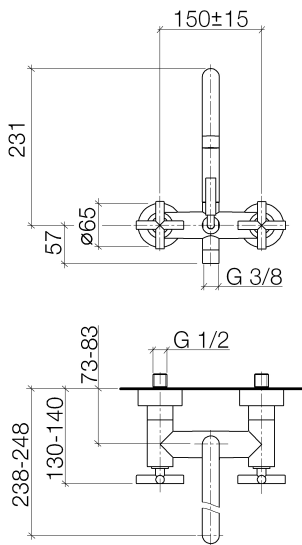


Bathtub - Tara.

Tube mixer for wall-mounted installation - polished chrome

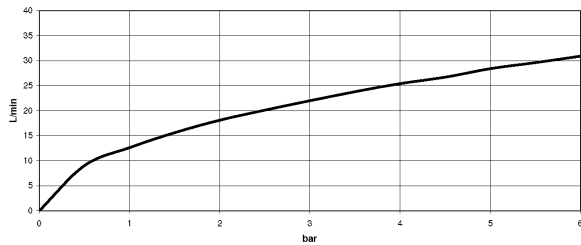
Article number: 25 100 892-00

Dimensional drawing



All dimensions in mm / inch = mm x 0,0394

Flow rate chart





Bathtub - Tara.

Tub mixer for wall-mounted installation - polished chrome

Article number: 25 100 892-00

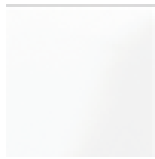
Other surface finishes



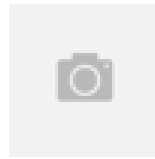
platinum matte
25 100 892-06



platinum
25 100 892-08



white matte
25 100 892-10



Brushed Durabronze
25 100 892-28



black matte
25 100 892-33



Dark Platinum matte
25 100 892-99

More custom finish options are available via special production (xTra Service). Please see our finish matrix for availability and pricing or contact a Dornbracht representative.

Required article



35 080 970-90 0010

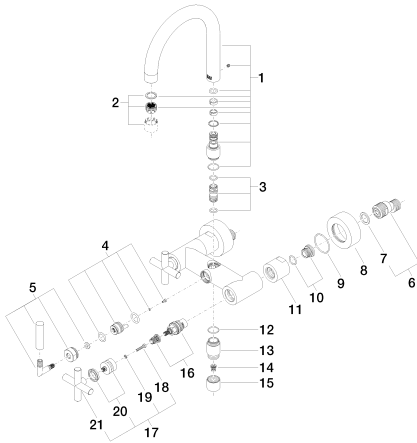
Rough-in adapter -

Bathtub - Tara.

Tub mixer for wall-mounted installation - polished chrome

Article number: 25 100 892-00

Spare parts list



Number	Item Number	Designation	Number of units
1	90 28 22 219 00-00	spout	1
2	90 23 01 024 00-00	aerator	1
3	90 21 10 011 00 90	diverter	1
4	90 15 01 005 00 90	insert	1
5	90 18 20 025 00-00	diverter	1
6	04 11 04 030 00 90	connection	2
7	09 14 20 010 90	seal	2
8	09 27 89 103-00	rosette	2
9	09 14 10 034 90	seal	2
10	04 29 05 014 00 90	nipple	2
11	09 23 10 064-00	nut	2
12	09 14 10 032 90	seal	1
13	09 24 03 121-00	nipple	1
14	09 23 01 131 90	back-flow preventer	1
15	09 21 02 143-00	sleeve	1
16	90 90 03 131 00 90	top	2
17	04 20 89 010 00-00	handle	2
18	09 30 30 075 90	screw	2
19	09 30 11 029 90	disc	2
20	90 12 12 007 00-00	base	2
21	09 20 89 010-00	handle	2