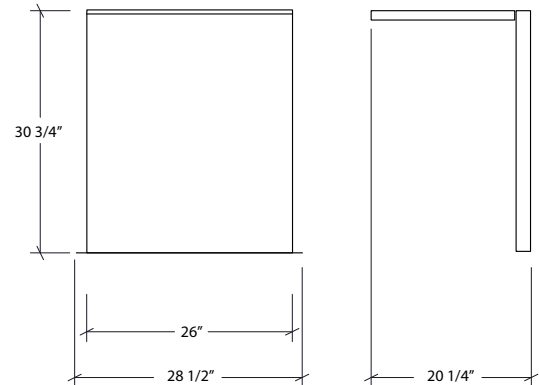


STAINLESS STEEL CABINETS

## HR-ESAP26-NX | ESSENCE

APPLIANCE BACK PANEL



### Specifications

Front panel style	Nature
Width	26"
Depth	2"
Material	Stainless Steel
Thickness	18 ga
Finish	ONYX
Installation	Self-Standing
Packaging dimension	25 x 35 x 2,5"
Packaging Weight	15 lb

### Features

- The appliance back panel is used behind an appliance to create a flush surface between cabinets. Compatible with most 24" outdoor appliances.
- Support brackets included for fixing a countertop.
- Modular system to optimize space and create a personalized outdoor kitchen area.
- ESSENCE collection module for a refined and unified look.
- Resistant commercial grade 18 gauge stainless steel construction with high-grade powder coated finish to withstand harsh environmental elements.
- Excellent resistance to humidity and UV.
- Environmentally friendly product made with 100% recyclable stainless steel.
- Proudly designed and made by hand in Canada.

### Warranty

Outdoor Refinements offers a LIMITED LIFETIME WARRANTY against defects of material and workmanship on the fixed components of its stainless steel cabinets, a PRORATED 10-YEAR LIMITED WARRANTY on painted finishes and a 2-YEARS LIMITED WARRANTY on all mobile parts and hardware (Hinges, slides, locks) all of which are applied following the purchase date. This warranty is limited to defects or damages resulting from a normal residential use. For further details on our product warranty, please refer to our catalog or Web site.