

# Star Recessed Light

Design by Mauro Marzollo

## LED

**Wattage** 1x16 W, 500 mA LED, 1500 Lumens  
1x23 W, 700 mA LED, 2000 Lumens

**Color Temperature** 2700 K, 3000 K, 3500 K, 4000 K

**Driver** Dimmable electronic driver  
ELV or 0-10 V  
(consult website: leucosusa.com for a list of compatible dimmers)

**LED Housing Options** New Construction, Remodel, Insulated, Chicago Plenum

## Lo-Voltage

**Remodel** 1x50 W, lo-voltage halogen, MR-16 ⚡  
**New Construction** 1x50 W, lo-voltage halogen, MR-16 ⚡  
**Insulated Ceiling** 1x35 W, lo-voltage halogen, MR-16 ⚡

**Damp Location** Yes

**Voltage** 120 Volts  
277 Volts

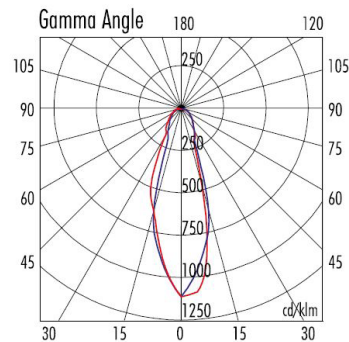
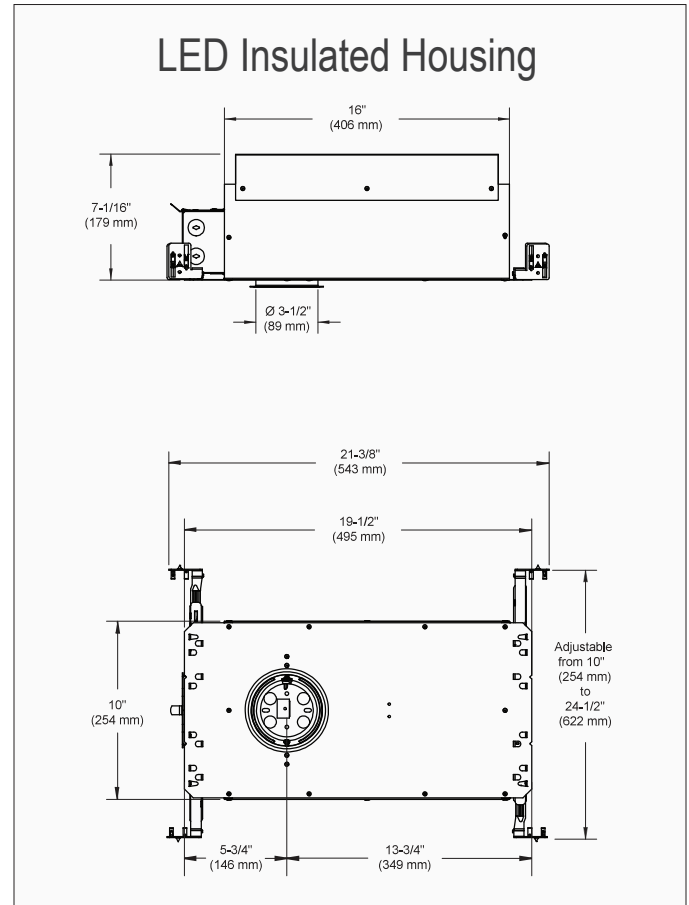
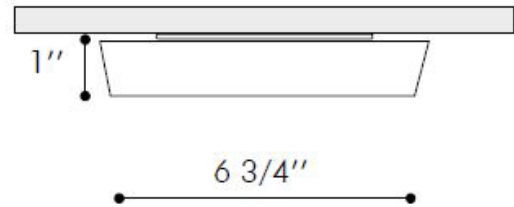
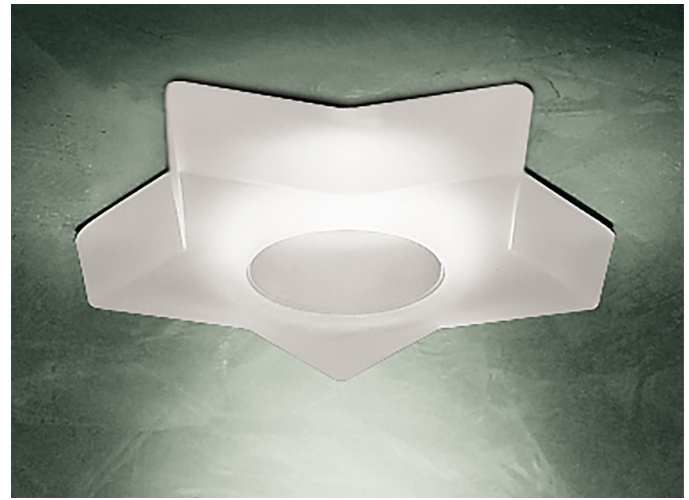
**Ceiling Cutout** 3 5/8" (92 mm)

**Trim Dimensions** Width: 6 3/4" (171 mm)  
Height: 1" (25 mm)

**Housing Dimensions** Length: 21 3/8" (543 mm)  
Width: 10" - 24 1/2" (254 - 622 mm)  
Height: 7 1/16" (179 mm)

## Certifications

Housing is UL listed

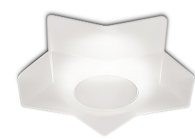


**MR16 - 50W 38°**

| h    | E max | E med |
|------|-------|-------|
| 1.00 | 1028  | 592   |
| 2.00 | 257   | 148   |
| 3.00 | 114   | 66    |
| 4.00 | 64    | 37    |
| 5.00 | 41    | 24    |



Crystal



Satin White