

### Features

---

Solid brass construction  
Bottle trap design that fits 1-1/4" drain tailpiece.  
Includes 1-1/4" x 1-1/2" bushing adapter for connection to 1-1/2" sewer line  
Bottle Trap 13" CL to wall length  
Flange not included

### CONTEMPORARY P TRAP, ROUND

# 301-2

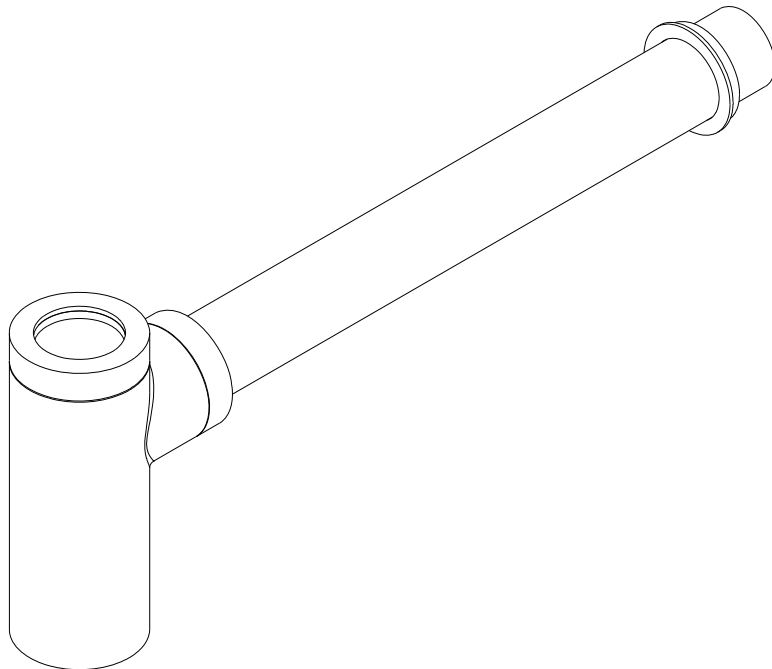


### Codes / Standards Compliance

Meets or exceeds the following at date of manufacture:

---

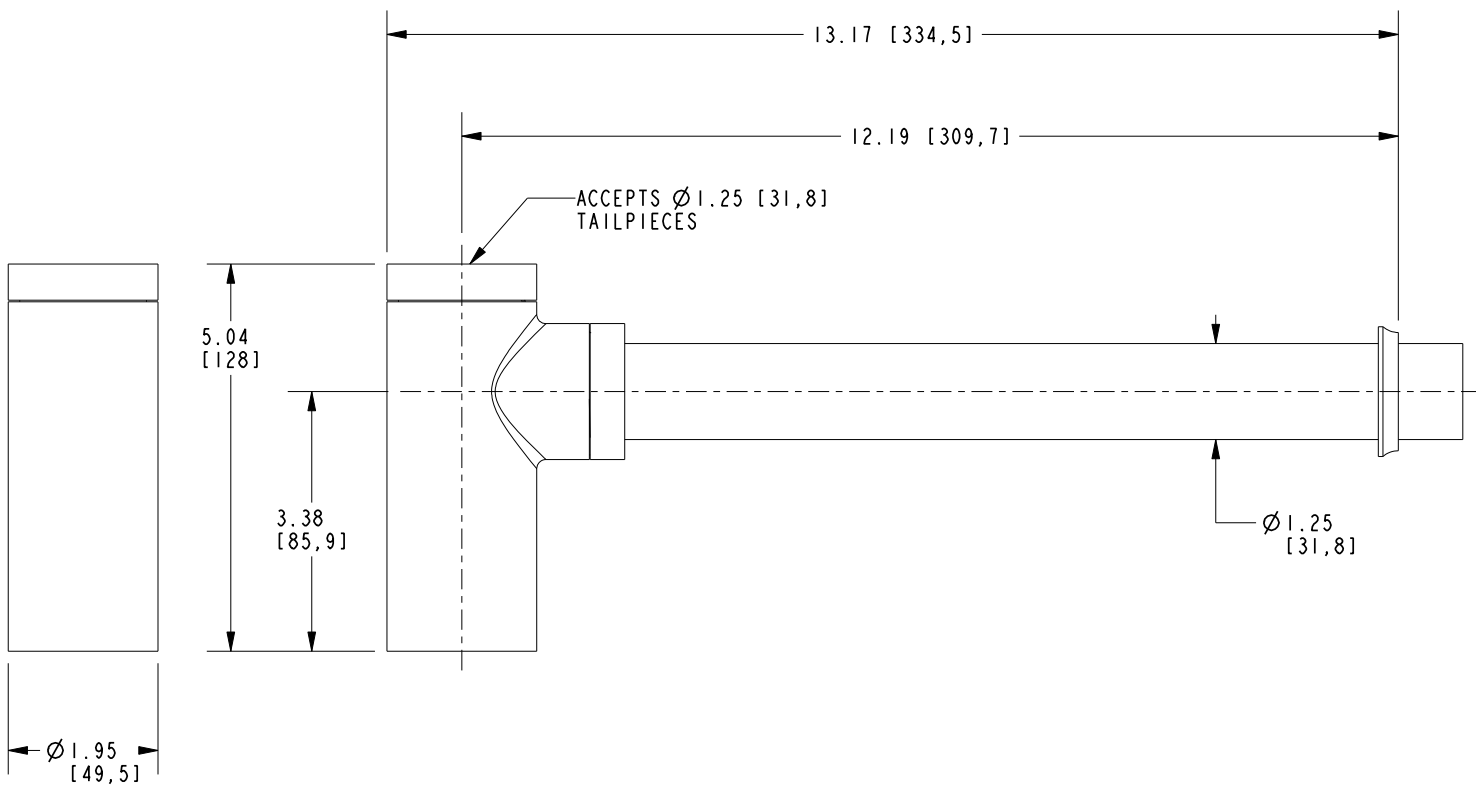
ASME A112.18.2/CSA B125.2  
IAPMO/UPC  
All applicable US Federal and State material regulations



# 301-2

## PRODUCT DIMENSIONS *(Units are in inches)*

Product Dimensions are provided for reference only. For specific product installation guidelines, please reference the Installation Instructions of the product being installed.



CONTEMPORARY P TRAP, ROUND

301-2

Page 2 of 2  
EN- 4783  
REV F

**NEWPORT BRASS**  
Flawless Beauty. From Faucet to Finish.

t: 949.417.5207 | [www.newportbrass.com](http://www.newportbrass.com)  
©2024 Brasstech, Inc.