

WATER COOLER MODELS
OASIS® PLF8SKTP
SUNROC HCWCD8
INSTRUCTIONS

1. INSPECTION

Inspect the carton and water cooler for evidence of rough handling and concealed damage. Damage claims should be filed with the carrier.

2. MAINTENANCE (Chilled Units Only)

The only maintenance operation required is the removal of dirt and lint from the condenser. Inspection should be done every three months. Disconnect the power supply cord, then clean the condenser with a small stiff non-wire brush when required. Observance of this procedure will ensure adequate air circulation through the condenser so operation is efficient and economical.

3. OVERLOAD PROTECTION (Chilled Units Only)

The compressor motor is equipped with an automatic reset protector which will disconnect the motor from the line in case of an overload.

4. LUBRICATION (Chilled Units Only)

This unit is equipped with a hermetically sealed compressor and requires no additional lubrication. The fan motor on this unit seldom needs oiling, but if required, a few drops of SAE 10 oil should be used.

5. TO PUT WATER COOLER INTO SERVICE

- a) **Note:** The following states require a licensed plumber to install cooler; AR, GA, MA, MI, OK, RI, SC, SD, TX, VT and WI. CA, KS, MN, NM and OR allow for a state-registered installer or contractor as well. State and local plumbing codes may prohibit the use of saddle tapping valves for water line connection in some applications. All connections must conform to applicable plumbing codes.
- b) Locate and install plumbing and electrical service in accordance with the roughing-in drawing.
- c) Install unit on the wall hanger.
- d) Install a trap in the waste line and shut-off valve in the water supply line. When the unit has an internal waste trap, the trap should be wrapped with insulating tape to prevent sweating.
- e) Use clean 3/8" OD copper tubing for water supply line. **INSTALL SHUT-OFF VALVE AND FLUSH BUILDING WATER SUPPLY LINE BEFORE INSTALLING UNIT.**
- f) Rotate the fan blade (chilled units only) by hand to see that it is free of obstructions.
- g) Check the available power supply against the water cooler data plate to assure correct electrical service. Plug power supply cord into wall outlet.
- h) For chilled units: To fill the cold water tank, open the shut-off and bubbler valve. Deflect the stream from the bubbler and run water until stream is free of bubbles.

6. TO DISCONTINUE USE OF WATER COOLER

- a) Close water shut-off valve.
- b) Provide container to catch water to be drained.
- c) Disconnect the power supply cord. Remove drain plug from tank.
- d) On push-button model, disconnect the water supply line at the shut-off valve and remove the tank drain plug. Actuate and hold-in the push-button to open the solenoid valve and completely drain the cooler. Disconnect the power supply cord.
- e) Remove or open the bubbler valve, and, if any, the glassfiller valve. Replace plug when draining is complete.
- f) **ALWAYS DRAIN ALL WATER WHEN FREEZING TEMPERATURES ARE ANTICIPATED AND BEFORE SHIPPING THE WATER COOLER.**

WARNING

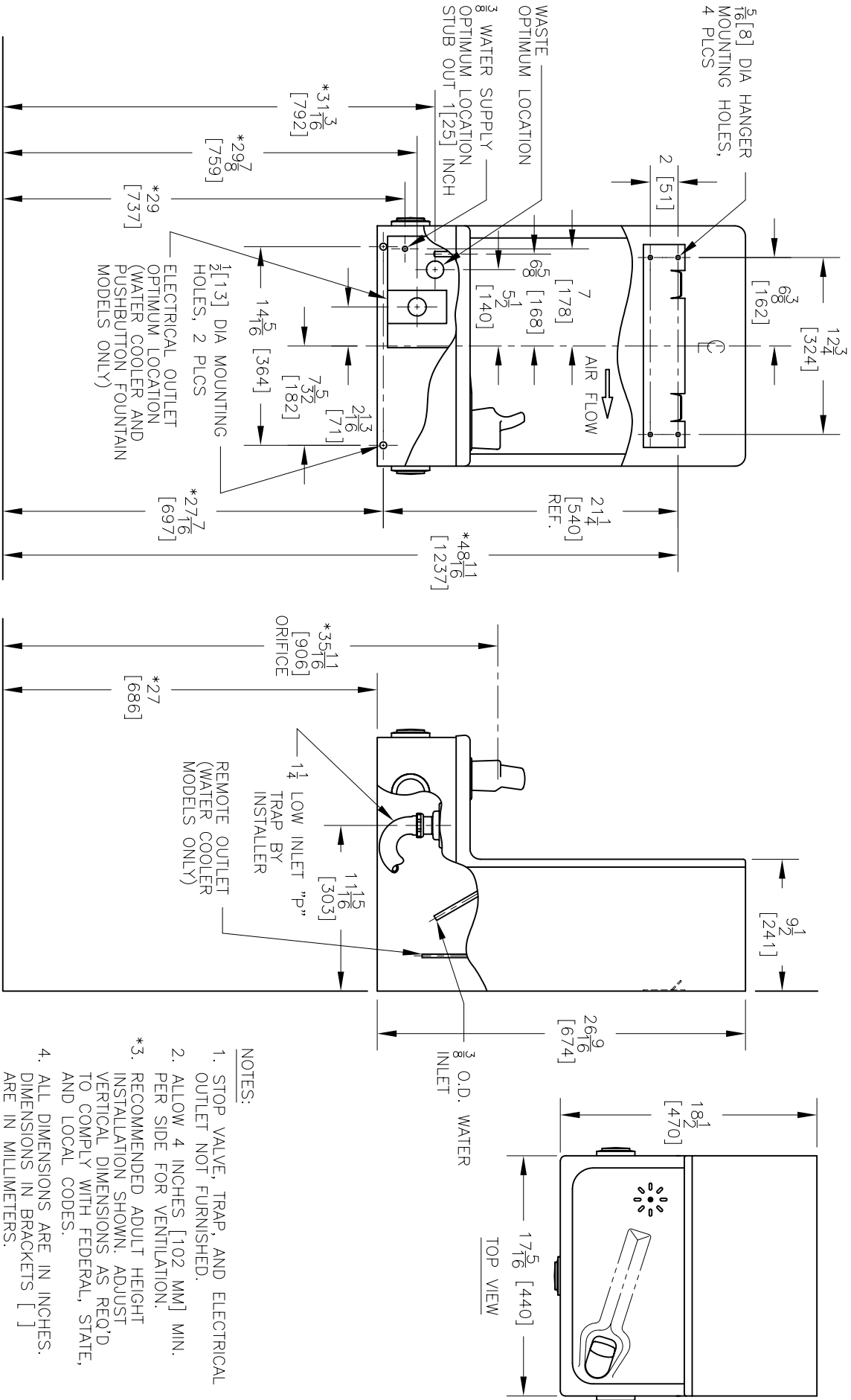
The warranty and the Underwriters' Laboratory Listing for this machine are automatically voided if this machine is altered, modified or combined with any other machine or device. Alteration or modification of this machine may cause serious flooding and/or hazardous electrical shock or fire.

EXCEPT AS SET FORTH HEREIN, THE MANUFACTURER MAKES NO OTHER WARRANTY, GUARANTEE OR AGREEMENT EXPRESSED, IMPLIED OR STATUTORY, INCLUDING ANY IMPLIED WARRANTY OR MERCHANTABILITY OR FITNESS FOR A PARTICULAR PURPOSE.



222 East Campus View Blvd. • Columbus, OH 43235 U.S.A.
1-800-950-3226
www.oasiscoolers.com

WATER COOLER MODELS
OASIS® PLF8SKTP
SUNROC HCWC8D8



NOTES:

1. STOP VALVE, TRAP, AND ELECTRICAL OUTLET NOT FURNISHED.
2. ALLOW 4 INCHES [102 MM] MIN. PER SIDE FOR VENTILATION.
3. RECOMMENDED ADULT HEIGHT INSTALLATION SHOWN. ADJUST VERTICAL DIMENSIONS AS REQ'D TO COMPLY WITH FEDERAL, STATE, AND LOCAL CODES.
4. ALL DIMENSIONS ARE IN INCHES. DIMENSIONS IN BRACKETS [] ARE IN MILLIMETERS.

THIRD ANGLE PROJECTION

ROUGHING-IN AND DIMENSIONAL DRAWING

Adjusting the bubbler for proper water stream.



The bubbler stream height has been factory adjusted, however, if adjustment is needed, insert a 5/64 hex wrench approximately 1-1/8" into the bubbler nozzle opening (A) until it bottoms out and is seated in an adjust screw. Turn the adjust screw clockwise to reduce the stream height or counterclockwise to increase the height. Note, less than one turn is required to go from a closed to a wide open flow. Do not overtighten the adjust screw clockwise to the full closed position as stripping of stem assembly may result.

032476-001