



Water Coolers

OASIS INTERNATIONAL

AQUA POINTE™

MODULAR FOUNTAIN AND HANDS-FREE BOTTLE FILLER COMBINATION

M8EBF, M12EBF

Suggested Specification

Model M8EBF shall deliver 8.0 gph of 50°F water at 90°F ambient and 80°F inlet water. Water flow to the bottle filler is by means of an electronically activated solenoid. Bottle filler is hands free and offers bottle counter and integrated filter monitor. Bottle filler will contain Freshield, which utilizes a silver-based antimicrobial compound that reduces the growth of micro-organisms and mildew to protect the surfaces from discoloration, odors and degradation. Basin shall be designed to eliminate splashing and standing water. Cooling system shall use R-134a refrigerant. Shall comply with ANSI A117.1 and ADA. Shall be listed by Underwriters' Laboratories to U.S. and Canadian standards Shall comply with ANSI/NSF 61. Model M8EBF delivers 8.0 gallons of chilled drinking water per hour. Model M12EBF delivers 12.0 gallons per hour. These models satisfy CABO/ANSI A117.1.



Standard Features

- > Built-in 100 micron strainer stops particles before they enter the waterway
- > Waterways are Lead-free in Materials & Construction
- > Heavy Duty steel frame
- > High Efficiency cooling tank and coil
- > Product Certified to NSF/ANSI Standard 61, Annex G (AB1953)
- > Refrigerant R-134a
- > Hands free bottle filler with integrated counter/ filter monitor

Finishes

- > Standard cabinet finish: Brushed Stainless Steel

Options (at additional cost)

- > Oasis Green Filtration system

Installation

- > Prior to roughing, consult with local, state and federal codes for proper mounting height
- > Shipped with complete instructions & wall mounting bracket
- > Removable front panels allow for easy access to filtration and refrigeration unit
- > Does not require a recessed mounting frame, but water supply, electrical and waste drain required.



ADA Compliant for reach ranges. These models meet guidelines for children's (ages 5 and up) accessibility providing the floor to button height is less than 40 inches and proper clear floor space is provided for frontal approach.



Components in this fountain are lead free as defined by the Safe Drinking Water Act Amendments of 1986, and the Lead Contamination Control Act of 1988.

Product Certified to NSF/ANSI Standard 61, Annex G (weighted average lead content of $\leq 0.25\%$) and is in compliance with California's Health & Safety Code Section 116875 (commonly known as AB1953). Units incorporating the Green Filter option are not NSF approved. However, the Green Filter has been independently tested to the NSF standards 42 and 53. Models covered by this specification comply with all known Plumbing Codes. Listed by Underwriters' Laboratories to U.S. and Canadian standards.



Freshield



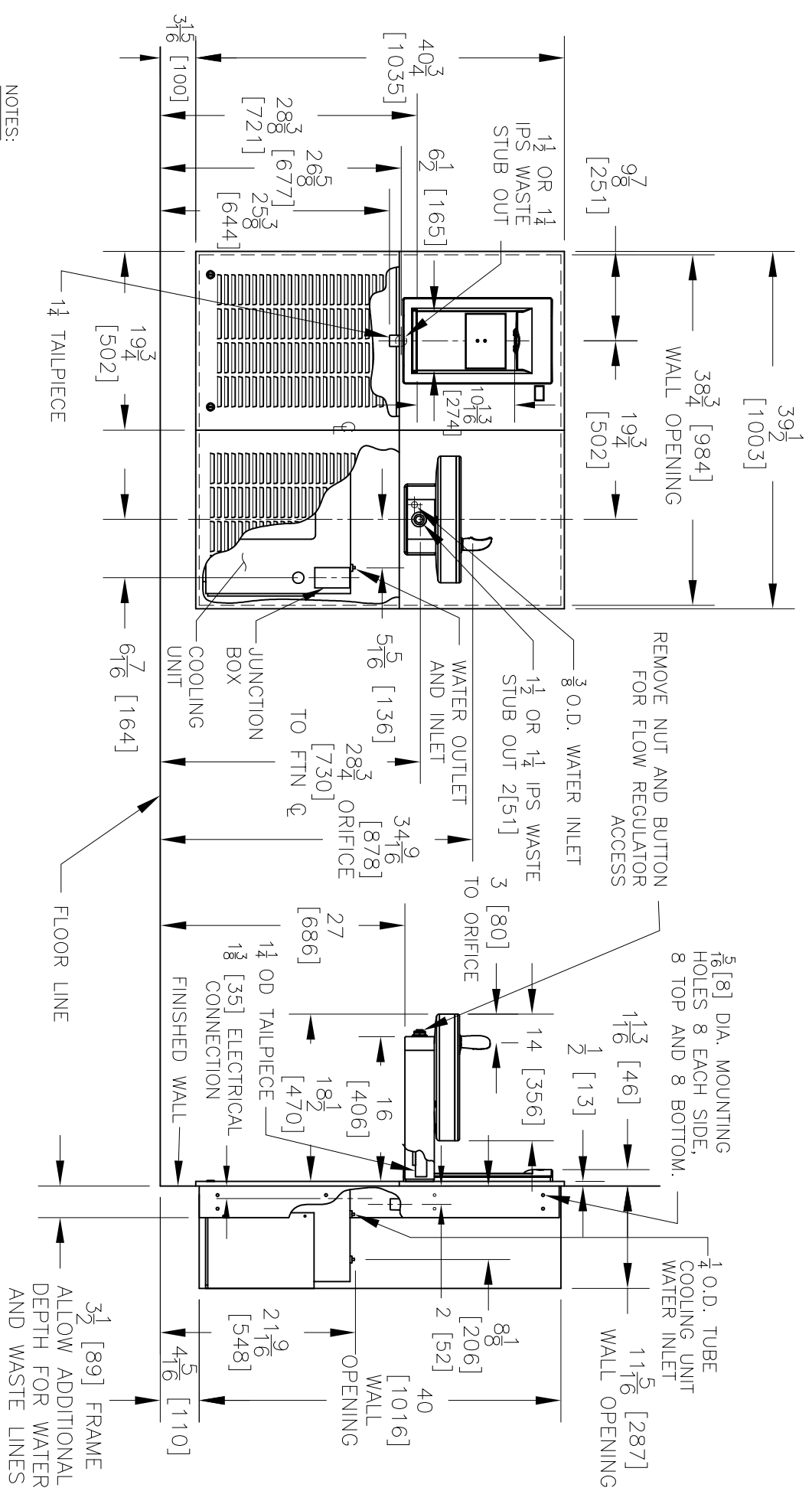
Certified to NSF/ANSI 61 AB1953

Model	50° F Drinking Water 90° F Ambient Air Temp*		115 Volts, 60 HZ			Cabinet Color Finish	Net Wt. Approx.
	Rated Capacity GPH	Base Rate GPH	Compr. HP	Full Load Amps	Rated Watts		
M8EBF	8.0	8.0	1/4	4.8	550	Yes	161 Lbs.
M12EBF	12.0	12.0	1/3	5.4	620	Yes	161 Lbs.

*Industry Standard Rating Condition 80°F inlet water temperature.

Specifications subject to change without notice

MODULAR SPORTS BOTTLE FILLER MODELS OASIS® M8EBF



NOTES:

- 1. RECOMMENDED ADULT HEIGHT INSTALLATION SHOWN. ADJUST VERTICAL DIMENSIONS AS REQUIRED TO COMPLY WITH FEDERAL, STATE AND LOCAL CODES.
- 2. STOP VALVE, TRAP, PIPE CONNECTOR TO WASTE WASTE LINE NOT PROVIDED. SHORT RADIUS TRAP REQUIRED
- 3. ALL DIMENSIONS ARE IN INCHES. DIMENSIONS IN BRACKETS [] ARE IN MILLIMETERS.

	THIRD ANGLE PROJECTION
	ROUGHING-IN AND DIMENSIONAL DRAWING