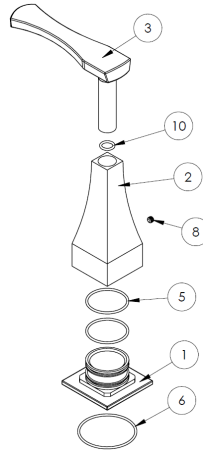
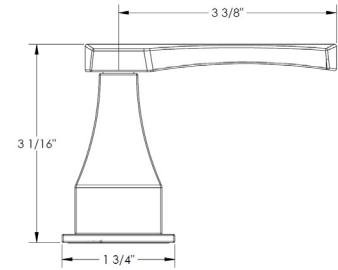


HANDLE TRIMS

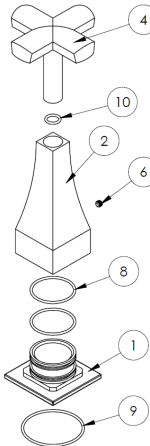
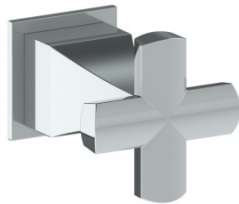
High Line (Code: BG4)



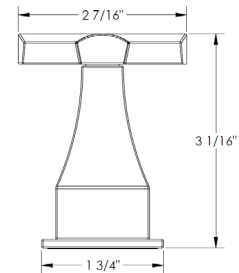
ITEM NO.	PART NUMBER	QTY.
1	BG4-ESC-RING	1
2	BG4-ESC	1
3	BG4-LVR	1
5	AS568 - 023	2
6	AS568 - 029	1
8	SSCUPSKT 0.164-32x0.125-HX-S	1
10	AS568 - 011	1



Market (Code: BG5)



ITEM NO.	PART NUMBER	QTY.
1	BG4-ESC-RING	1
2	BG4-ESC	1
4	Cross	1
6	SSCUPSKT 0.164-32x0.125-HX-S	1
8	AS568 - 023	2
9	AS568 - 029	1
10	AS568 - 011	1



Specification from Finished Wall to Tip of Broach Stem

HANDLE TRIM #	MEASUREMENT (IN.)
BG4/BG5	2 3/4

Note: When fitting handle it may be necessary to shorten broach stem and/or threaded nipple to eliminate gap between handle and escutcheon

IMPORTANT INSTALLATION INFORMATION

- USE TEFLON TAPE OR PIPE SEALANT FOR THREADED CONNECTIONS
- DO NOT USE PLUMBER'S PUTTY ON ANY OF THE BRASS COMPONENTS
This will cause the finish to tarnish and void the warranty. A non-corrosive Alkoxy Silicone is recommended.
- DURING SWEATING OF LINES DO NOT OVERHEAT CASTING
Overheating may cause damage to internal mechanism
- COPPER ADAPTORS MAY BE REQUIRED TO COMPLETE YOUR INSTALLATION

For technical support, please call 718-257-2800